

Color Cap & Color Locking Clip

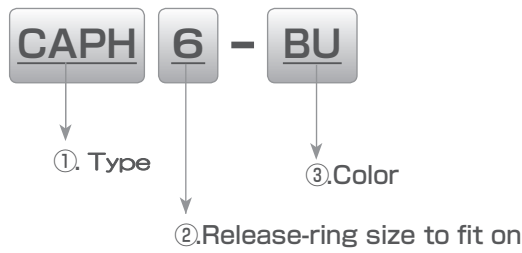
- A solution for your complicated piping !

10 different cap colors for identifying individual piping line



- *The Color Cap snap-on design allows for easy installation on the Release ring and changing Colors.*
- *The Color Cap can fit on push-in fittings with ports located next to each other (side-by-side) like PY, PX, PA fittings, etc.*
- *Color Locking Clip secures the Release ring in its position to prevent an accidental disconnection of the tubing as well as Color identification .
(Only for Mini type of fittings)*

Model designation (Example)



① Type

Code	CAPH	CAPL
Type.	Color Cap	Color Locking Clip

② Size

		Standard type					
Code		4	6	8	10	12	16
Size (mm)		ø4	ø6	ø8	ø10	ø12	ø16
Inch size		ø5/32	ø3/16, ø1/4	ø5/16	ø3/8	ø1/2	ø5/8

● Standard type: Release-ring shape



		Mini type			
		Oval		Round	
Code		4M	6M	4MQ	6MQ
Size (mm)		ø4	ø6	ø4	ø6
Inch size		ø1/8, ø5/32	ø1/4	ø1/8, ø5/32	—

● Mini type: Release-ring shape (Oval)



● Certain models of Mini type: Round Release-ring



※ Color Cap is not available for Mini type with Round release-ring

③ Color

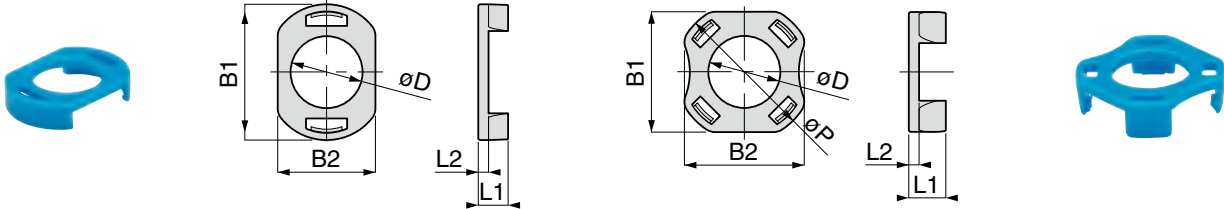
Code	B	R	O	YB	Y	G	BU	CB	GR	W
Color	Black	Red	Orange	Ocher	Yellow	Green	Blue	Sky blue	Gray	White

■ Type, Ring shape, Size Chart

Type		Standard						Mini			
Ring shape		Round						Oval		Round	
Size code		4	6	8	10	12	16	4M	6M	4MQ	6MQ
Applicable Tube O.D.	mm	ø4	ø6	ø8	ø10	ø12	ø16	ø4	ø6	ø4	ø6
	Inch	ø5/32	ø3/16, ø1/4	ø5/16	ø3/8	ø1/2	ø5/8	ø1/8, ø5/32	ø1/4	ø1/8, ø5/32	—
Code	CAPH	○	○	○	○	○	○	○	○	—	—
	CAPL	—	—	—	—	—	—	○	○	○	○

CAPH Color cap

RoHS



CAPH□M□

CAPH□-□

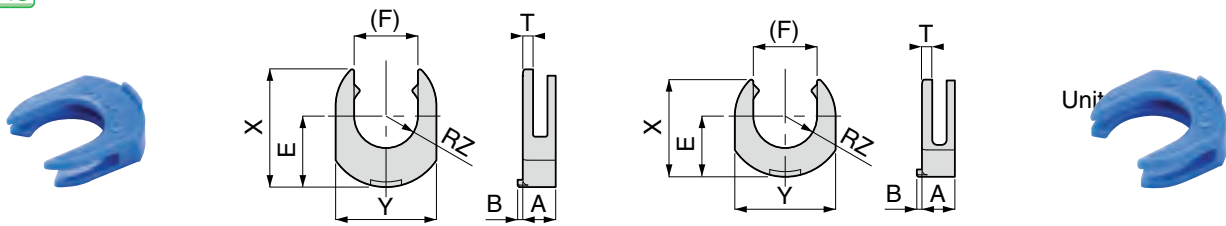
Unit : mm

Model code	øD	B1	B2	øP	L1	L2	Weight (g)	CAD file name
CAPH4M-□	5	11.2	7.5	-	2.9	1	0.1	CAPH4M_
CAPH6M-□	7	13.2	9.5	-	2.9	1	0.2	CAPH6M_
CAPH4-□	5	9.8	9.6	11.5	3.3	1	0.1	CAPH4_
CAPH6-□	7	11.7	11.7	13.4	3.6	1	0.2	CAPH6_
CAPH8-□	9	13.7	13.6	15.4	3.9	1	0.2	CAPH8_
CAPH10-□	11	16.7	16.7	18.4	4.1	1	0.3	CAPH10_
CAPH12-□	13	19.7	19.7	21.4	4.3	1	0.4	CAPH12_
CAPH16-□	17	23	23	24.2	3.8	0.7	0.3	CAPH16_

※ □ in Model code / Replaced with Color code

CAPL Color locking clip

RoHS



CAPL□M□

CAPL□MQ-□

Unit

Model code	A	B	T	E	X	Y	RZ	(F)	Weight (g)	CAD File name
CAPL4M-□	2.9	0.5	1	5.9	10	7.8	2.1	4.2	0.1	CAPL4M
CAPL4MQ-□	2.9	0.5	1	4.9	8	7.8	2.1	4.2	0.1	CAPL4MQ
CAPL6M-□	3.2	0.5	1	6.9	11.4	9.8	3.1	6.2	0.2	CAPL6M
CAPL6MQ-□	3.2	0.5	1	5.9	9.4	9.8	3.1	6.2	0.2	CAPL6MQ

※ □ in Model code / Replaced with Color code

⚠ Detailed Safety Instructions

Before using PISCO products, be sure to read "Safety Instructions" and "Common Safety Instructions for Products Listed in This Catalog" and "Common Safety Instructions for Fittings".

Caution

1. Since Color Cap and Color Lock Cap are very small, be careful not to lose or drop it into facilities when attaching or detaching them.
2. Color Lock Cap has the front and the back. Make sure that PISCO logo comes the top side. Oval shape cap is produced for the oval shape release-ring. Make sure the direction of attachment.
3. Minimum order quantity of Color Cap is from 1 set (10pcs/set).
4. CAPH cap with round shape is not available for Mini-type.
5. Do not press the corners on the latches (circled positions in the drawing) when disconnecting tube with a CAPH cap on.



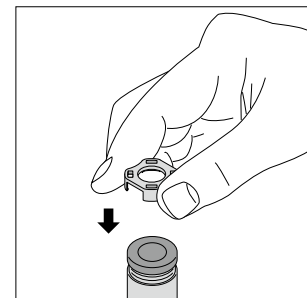
6. Color cap can not be attached to Tube Fitting SUS316 Series, Tube Fitting Anti-Spatter Series, Tube Fitting Brass Series, Tube Fitting Chemical Series, Speed Controller Chemical Series, Speed Controller Anti-Spatter Series, Speed Controller Brass Series, Needle Valve SUS316 Series and Needle Valve Brass Series.
7. Material of color cap is POM.

■ How to attach Color Cap

1. How to attach Color Cap

① Color Cap attachment

To attach, put it on the release-ring.



2. How to attach Color Locking Clip

① Color Locking Clip attachment

To attach, slide it over the release-ring.

