

## Non-standard Product [Fitting]

Special Products Information

□ : F123-1P

POM all resin collet type lightweight push-in fitting

## All resin Fitting

-S3

S3 spec. (Standard option)

Oil-free

Non-grease

Model Designation ex. AWPL8-02

Type: Elbow  
 Tube O.D.: ø8mm  
 Thread size: R1/4

Model Designation ex. AWPC8-02

Type: Straight  
 Tube O.D.: ø8mm  
 Thread size: R1/4

Model Designation ex. AWPE8

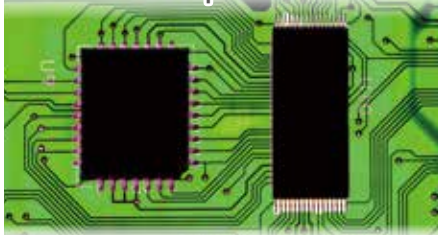
Type: Union Tee  
 Tube O.D.: ø8mm

- Introducing all resin push-in fitting designated for urethane tubes.  
 Resin body: POM (with glass filler), Rubber material: EDPM

- Ideal for semiconductor and secondary battery manufacturing, and for use with pure water or water.

About S3-spec. compliant product

- No metal parts
- low-concentration ozone resistance



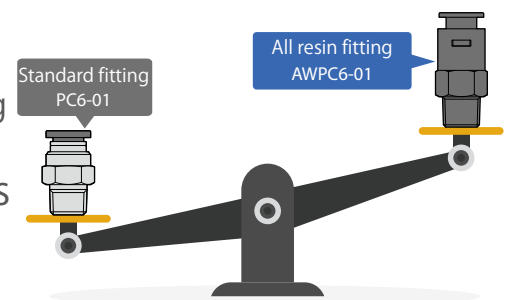
- Ideal for making equipment lighter.  
 Weighing about 1/3 of the weight of a standard fitting

- Suited for use or in the environments where metals should be avoided.

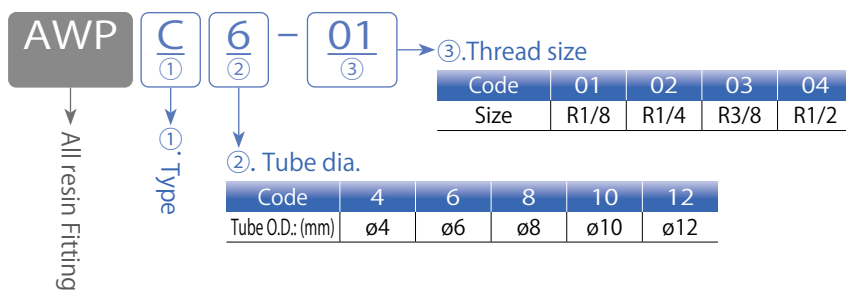
Preventing rust and metal ion

- Suited for use or in the environments where oil should be avoided.

Making non-grease, oil-free specifications standard



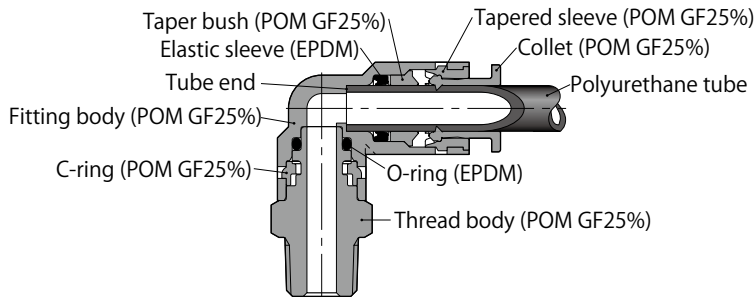
Model Designation (Example)



Specifications

Fluid medium	Air	Water (conditional*)
Max. operating pressure	0.9MPa	0.8MPa
Max. vacuum	-100kPa	—
Operating temp. range	0 to 60°C (no freezing)	
Applicable tubes	Polyurethane (Model: UB, UC, UBT, UBS, US)	
Remarks	Oil-free	

Sectional drawing (Elbow type: AWPL)



△Warning \* The following conditions must be observed when the fluid medium is water or liquid.

1. Surge pressure must be controlled lower than max. operating pressure when using water or liquid as a fluid medium.
2. General tap water in Japan, free from foreign substances or contamination, can be used. Carry out the evaluation under an actual operating condition for using other kind of water.
3. Be sure to use Insert Ring (WR) when using water or liquid as a fluid medium.

Type & size chart

Type	Model code AWPCøD-R	Price (¥)	Type	Model code AWPLøD-R	Price (¥)	Type	Model code AWPBøD-R	Price (¥)			
<b>AWPC</b> Straight øD R	AWPC4-01	270	<b>AWPL</b> Elbow øD R	AWPL4-01	400	<b>AWPB</b> Branch Tee øD R	AWPB4-01	540			
	AWPC6-01	280		AWPL6-01	420		AWPB6-01	570			
	AWPC6-02	290		AWPL6-02	430		AWPB6-02	580			
	AWPC8-01	330		AWPL8-01	470		AWPB8-01	640			
	AWPC8-02	340		AWPL8-02	480		AWPB8-02	650			
	AWPC10-02	440		AWPL10-02	640		AWPB10-02	840			
	AWPC10-03	450		AWPL10-03	650		AWPB10-03	850			
	AWPC12-02	470		AWPL12-02	710		AWPB12-02	970			
	AWPC12-03	490		AWPL12-03	720		AWPB12-03	970			
	AWPC12-04	490		AWPL12-04	720		AWPB12-04	970			
<th>Type</th> <th>Model code AWPUøD</th> <th>Price (¥)</th> <th colspan="3"> <th>Type</th> <th>Model code AWPVøD</th> <th>Price (¥)</th> </th>			Type	Model code AWPUøD	Price (¥)	<th>Type</th> <th>Model code AWPVøD</th> <th>Price (¥)</th>			Type	Model code AWPVøD	Price (¥)
<b>AWPU</b> Union Straight øD	AWPU4	390	<b>AWPV</b> Union Elbow øD	AWPV4	410	<b>AWPE</b> Union Tee øD	AWPE4	540			
	AWPU6	410		AWPV6	430		AWPE6	570			
	AWPU8	450		AWPV8	460		AWPE8	630			
	AWPU10	580		AWPV10	600		AWPE10	820			
	AWPU12	640		AWPV12	650		AWPE12	930			
<th>Type</th> <th>Model code AWPYøD</th> <th>Price (¥)</th> <td colspan="3"></td>			Type	Model code AWPYøD	Price (¥)						
<b>AWPY</b> Union Y 2-øD	AWPY4	540									
	AWPY6	560									
	AWPY8	610									
	AWPY10	840									
	AWPY12	900									

**!** As this is a non-standard, special order product, please contact our Overseas Sales Department or nearest sales office in your region (listed below) for details on delivery time and prices.  
Please use this product after thorough evaluation and judgment.

**PISCO**  
OVERSEAS SALES DEPARTMENT (HQ)  
PISCO TAIWAN CO., LTD.  
NIHON PISCO TAIWAN CO., LTD  
PISCO USA, INC.  
PISCO KOREA CO., LTD  
PISCO VIETNAM CO., LTD  
NIHON PISCO CO., LTD. SHANGHAI REPRESENTATIVE OFFICE  
NIHON PISCO CO., LTD. BANGKOK REPRESENTATIVE OFFICE  
● Specifications in this catalog are subject to change without prior notice.

TEL. +81-(0)265-76-7751 FAX. +81-(0)265-76-3305  
TEL. +886-(0)6-726-5762 FAX. +886-(0)6-726-5752  
TEL. +886-(0)6-726-4520 FAX. +886-(0)6-726-1526  
TEL. +1-630-993-3500  
TEL. +82-32-327-9795 FAX. +82-32-327-0385  
TEL. +84-24-3200-0310 FAX. +84-24-3200-5331  
TEL. +86-21-31332623  
TEL. +66-(0)2-612-7366 FAX. +66-(0)2-612-7399

e-mail. intl@pisco.co.jp  
e-mail. P8638@ms16.hinet.net  
  
e-mail. inquiry@pisco.com  
e-mail. webmaster@pisco.co.kr  
e-mail. piscovn@pisco-vn.com  
e-mail. ribenpisco@gmail.com  
e-mail. piscochk@pisco.co.jp

<https://www.pisco.co.jp/en>