

## Non-standard Product [Fitting]

Special Products Information

□ : F123-1P

POM all resin collet type lightweight push-in fitting

## All resin Fitting

-S3

S3 spec. (Standard option)

Oil-free

Non-grease

Model Designation ex. AWPL8-02

Type: Elbow  
 Tube O.D.: ø8mm  
 Thread size: R1/4

Model Designation ex. AWPC8-02

Type: Straight  
 Tube O.D.: ø8mm  
 Thread size: R1/4

Model Designation ex. AWPE8

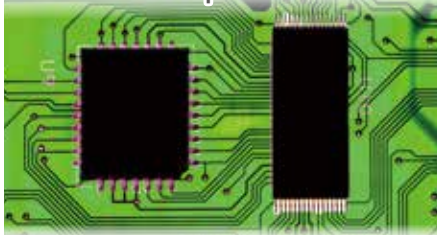
Type: Union Tee  
 Tube O.D.: ø8mm

- Introducing all resin push-in fitting designated for urethane tubes.  
 Resin body: POM (with glass filler), Rubber material: EDPM

- Ideal for semiconductor and secondary battery manufacturing, and for use with pure water or water.

About S3-spec. compliant product

- No metal parts
- low-concentration ozone resistance



- Ideal for making equipment lighter.

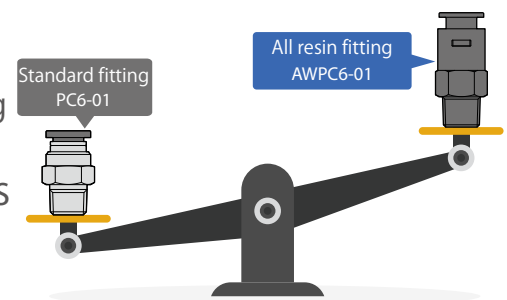
Weighing about 1/3 of the weight of a standard fitting

- Suited for use or in the environments where metals should be avoided.

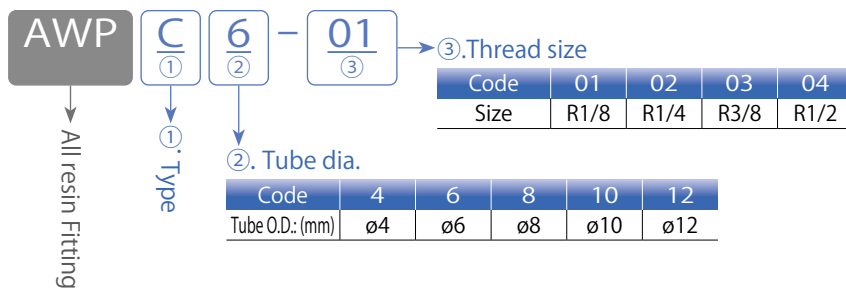
Preventing rust and metal ion

- Suited for use or in the environments where oil should be avoided.

Making non-grease, oil-free specifications standard



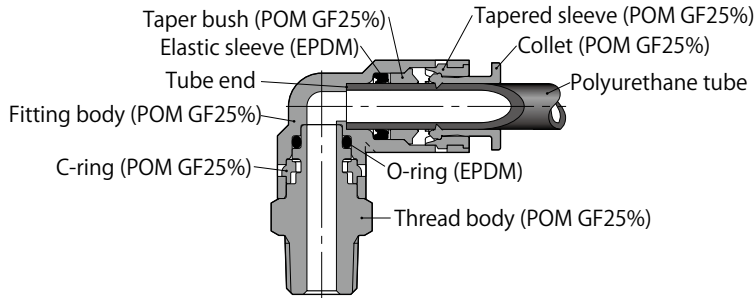
Model Designation (Example)



Specifications

Fluid medium	Air	Water (conditional*)
Max. operating pressure	0.9MPa	0.8MPa
Max. vacuum	-100kPa	—
Operating temp. range	0 to 60°C (no freezing)	
Applicable tubes	Polyurethane (Model: UB, UC, UBT, UBS, US)	
Remarks	Oil-free	

Sectional drawing (Elbow type: AWPL)



△Warning \* The following conditions must be observed when the fluid medium is water or liquid.

1. Surge pressure must be controlled lower than max. operating pressure when using water or liquid as a fluid medium.
2. General tap water in Japan, free from foreign substances or contamination, can be used. Carry out the evaluation under an actual operating condition for using other kind of water.
3. Be sure to use Insert Ring (WR) when using water or liquid as a fluid medium.

Type & size chart

<p>Type</p> <p><b>AWPC</b> Straight</p> <p>øD</p>	<p>Model code</p> <p>AWPCøD-R</p> <p>AWPC4-01</p> <p>AWPC6-01</p> <p>AWPC6-02</p> <p>AWPC8-01</p> <p>AWPC8-02</p> <p>AWPC10-02</p> <p>AWPC10-03</p> <p>AWPC12-02</p> <p>AWPC12-03</p> <p>AWPC12-04</p>	<p>Type</p> <p><b>AWPL</b> Elbow</p> <p>øD</p>	<p>Model code</p> <p>AWPLøD-R</p> <p>AWPL4-01</p> <p>AWPL6-01</p> <p>AWPL6-02</p> <p>AWPL8-01</p> <p>AWPL8-02</p> <p>AWPL10-02</p> <p>AWPL10-03</p> <p>AWPL12-02</p> <p>AWPL12-03</p> <p>AWPL12-04</p>	<p>Type</p> <p><b>AWPB</b> Branch Tee</p> <p>øD</p>	<p>Model code</p> <p>AWPBøD-R</p> <p>AWPB4-01</p> <p>AWPB6-01</p> <p>AWPB6-02</p> <p>AWPB8-01</p> <p>AWPB8-02</p> <p>AWPB10-02</p> <p>AWPB10-03</p> <p>AWPB12-02</p> <p>AWPB12-03</p> <p>AWPB12-04</p>
<p>Type</p> <p><b>AWPU</b> Union Straight</p> <p>øD</p>	<p>Model code</p> <p>AWPUøD</p> <p>AWPU4</p> <p>AWPU6</p> <p>AWPU8</p> <p>AWPU10</p> <p>AWPU12</p>	<p>Type</p> <p><b>AWPV</b> Union Elbow</p> <p>øD</p>	<p>Model code</p> <p>AWPVøD</p> <p>AWPV4</p> <p>AWPV6</p> <p>AWPV8</p> <p>AWPV10</p> <p>AWPV12</p>	<p>Type</p> <p><b>AWPE</b> Union Tee</p> <p>øD</p>	<p>Model code</p> <p>AWPEøD</p> <p>AWPE4</p> <p>AWPE6</p> <p>AWPE8</p> <p>AWPE10</p> <p>AWPE12</p>
<p>Type</p> <p><b>AWPY</b> Union Y</p> <p>2-øD</p>	<p>Model code</p> <p>AWPYøD</p> <p>AWPY4</p> <p>AWPY6</p> <p>AWPY8</p> <p>AWPY10</p> <p>AWPY12</p>				

**!** As this is a non-standard, special order product, please contact our Overseas Sales Department or nearest sales office in your region (listed below) for details on delivery time and prices.  
Please use this product after thorough evaluation and judgment.

**PISCO**  
OVERSEAS SALES DEPARTMENT (HQ)  
PISCO TAIWAN CO., LTD.  
NIHON PISCO TAIWAN CO., LTD  
PISCO USA, INC.  
PISCO KOREA CO., LTD  
PISCO VIETNAM CO., LTD  
NIHON PISCO CO., LTD. SHANGHAI REPRESENTATIVE OFFICE  
NIHON PISCO CO., LTD. BANGKOK REPRESENTATIVE OFFICE

TEL. +81-(0)265-76-7751  
TEL. +886-(0)6-726-5762  
TEL. +886-(0)6-726-4520  
TEL. +1-630-993-3500  
TEL. +82-32-327-9795  
TEL. +84-24-3200-0310  
TEL. +86-21-31332623  
TEL. +66-(0)2-612-7366

FAX. +81-(0)265-76-3305  
FAX. +886-(0)6-726-5752  
FAX. +886-(0)6-726-1526  
FAX. +82-32-327-0385  
FAX. +84-24-3200-5331  
FAX. +66-(0)2-612-7399

e-mail. intl@pisco.co.jp  
e-mail. P8638@ms16.hinet.net  
e-mail. inquiry@pisco.com  
e-mail. webmaster@pisco.co.kr  
e-mail. piscovn@pisco-vn.com  
e-mail. ribenpisco@gmail.com  
e-mail. piscochk@pisco.co.jp

<https://www.pisco.co.jp/en>